



The NEW Versamill® AX305D dental milling machine provides super versatility with its ability to mill virtually any dental material while providing the thinnest of margins without chipping.

The AX305D is a desktop milling machine specialized for soft materials. Small and compact, but fast and accurate. The extremely stable construction of the AX305D enables the efficient dry-machining of dental restorations. Optimized to delicately mill with thin, clean margins, the prostheses that require sophisticated techniques such as facial, undercut, inlay, and veneer can be milled precisely—without chipping.



### FLEXIBILITY TO MEET THE DEMANDS OF TODAY AND TOMORROW

Process a wide variety of dental material, including: PMMA, Zirconia, PEEK, Pekkton, Composites, Hybrid-Ceramic, Titanium Premill Abutments, Glass-Ceramic, and More.

98mm disc with up to 30mm thickness.

### INDICATIONS



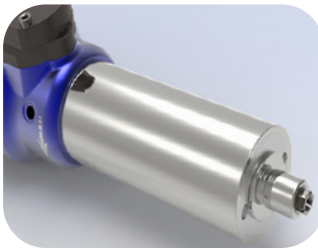
### AVAILABLE COLORS



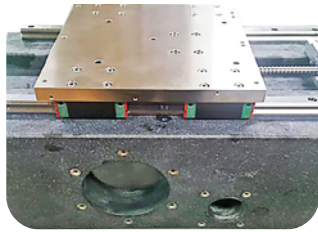
Clinician Blue

Sage Wisdom

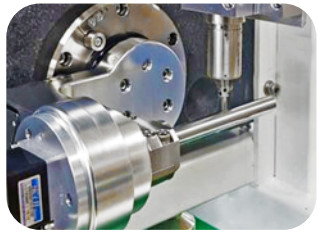
Charcoal



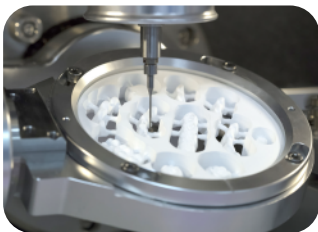
High-torque, .5kW max spindle with ceramic hybrid bearings that help to reduce margin thickness, and extend spindle life by reducing deflection and protecting against contamination by cutting chips and coolant.



Heavy, stable, granite frame with the lowest coefficient of linear expansion. Provides the rigidity and precision to enable the production of highest possible restoration precision.



Precise assembly and testing of perpendicularity of A-axis and B-axis-vital for accurate multi-axis manufacturing.

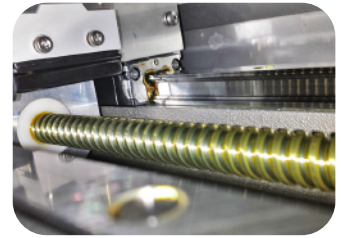


12-station ATC houses 3mm diameter cutting tools with automatic tool management and breakage sensor.



Dry Milling Auto Calibration

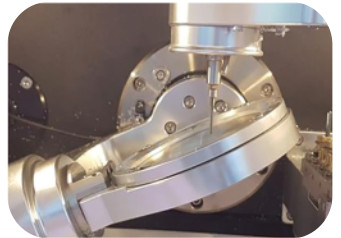
Superior dynamic motion and positional accuracy thanks to large-diameter precision ball screws, anti-backlash ball nuts and linear guides with closed loop servo drives.



C-Clamp fixture provides unlimited access to critical facial features which produces the highest levels of aesthetics-without the concern of undercuts or typical manufacturing limitations.



Couple class-leading rotary operating range of  $\pm 35^\circ$  with granite frame, and Axsys expert machining templates to produce restorations with undercuts, and clean, thin margins.



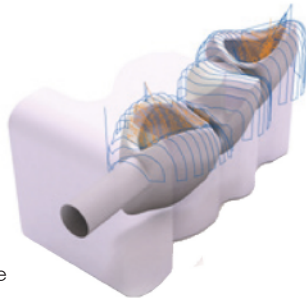
The strength and rigidity of the Versamill AX305D enables the efficient processing of restorations while yielding the thinnest and cleanest of restorative margins.



## CAM SOFTWARE: PROVEN & FULL-FEATURED

The Versamill AX305D is powered by your choice of GO2cam or hyperDENT CAM software from FOLLOW-ME! Technology Group.

These products are selected as they incorporate efficient proven milling cycles from the industrial segment to provide maximum process stability and indication quality, including patent-protected milling strategies used for complex materials ensuring perfect surface quality while maximizing tool life.



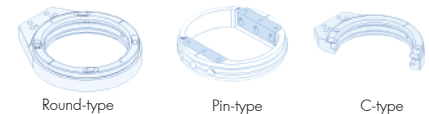
### OPTIONAL MODULES

Full Denture, Hybrid, Implant, Template Generator

Multi Import & Nesting, Implant Bar/Bridge, Expert, Expanded Import

All Versamill machines come with Axsys' award-winning support and unique software and machine enhancements not available from any other supplier. We leverage over 40 years of digital design and manufacturing experience-spanning a variety of industries-to provide additional functionality, unrivaled reliability and increased productivity.

## FIXTURES



### Versamill AX305D Specifications

Number of axes:		5 simultaneous
Travel (x, y, z axis):	(mm)	682 x 500 x 712
B Rotational axis:	(degrees)	$\pm 34^\circ$
Processing:		Dry
Drive Mechanism:		Ballscrew
Way System:		Linear Guide
Air Requirement:		6.5 bar
Spindle Power:	(watts)	AC .5kW max
Spindle Speed:	(rpm)	60,000
ATC number of tools:	3.0mm $\varnothing$	12
Axis Drive System		Servo Motor w/Encoder
Blank disc diameter:	(mm)	98 $\varnothing$
Machine size (W x H x D):	(mm)	620 x 1620 x 800
Weight:	(mm)	100Kg
Input Power	(VAC/50-60Hz)	220 /6A Single Phase